



Delivering happiness through Toys

[WWW.KRISHTOYS.COM](http://WWW.KRISHTOYS.COM)





# ABOUT US

## KRISH TOYS

Incepted in the year 2014, we “Krish Toys”, are the prominent Sole Proprietorship Company, devoted towards Manufacturing, Exporting, Importing and Supplying the qualitative range of Designer Balloon, Plastic Toy, Kids Truck, Kids Holi Toys, Kids Plane, Kids Racing Cars, Spinner Toy and Kids Sport Products. Located at Ahmedabad (Gujarat, India), we are backed by an advanced infrastructural unit, which sprawls over a large area of land. Our infrastructural unit is divided into numerous divisions such as sales & marketing, production, quality testing, and warehousing. Under the guidance of **“Mr. Akshay Barad”** (Proprietor), we have been able to cater the several requirements of our valued clients.

## MISSION STATEMENT

To develop, manufacture, and market high quality products for children that are enjoyable for the child, have educational benefits for the child, and are a good value for the purchaser.

# PROCESS & TECHNOLOGY

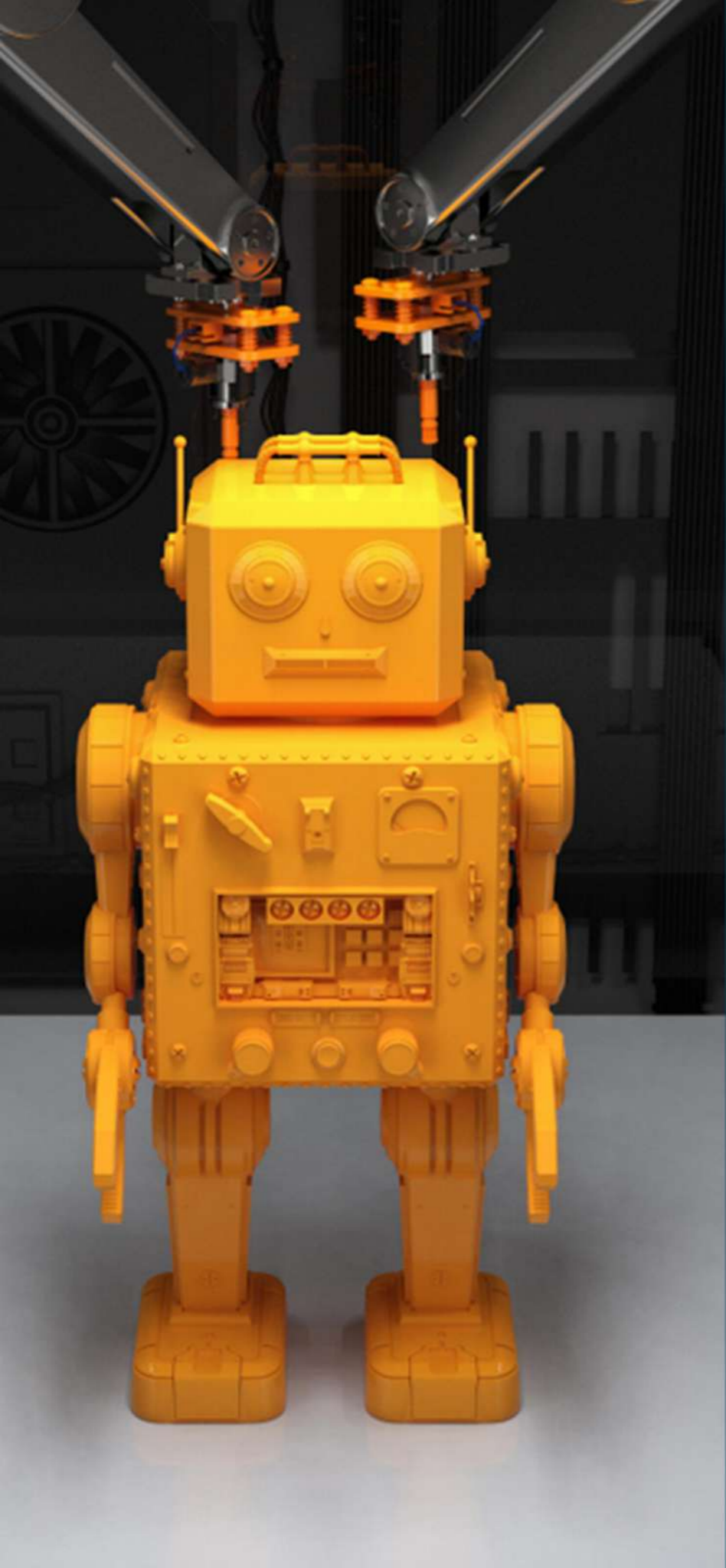
We use the latest less plastic injection moulding machines from Ferromatik Milacron and Haitian. These machines can accommodate much larger molds compared to equivalent sized machines from other manufactures.

Since these machines are closed loop, there is an increase in mould life by at least 50%. The machine size varies from 50 Tons (498.2kN) to 160 Tons (1569.06kN).

We operate with a combination of Ferromatik Milacron and Haitian Machines; the use of injecto-precision bimetallic screws aids us in manufacturing glass filled components up to 40%.

**“Toggle and Ram clamping injection moulding machine”**





## PRE MOULDING

Before taking any plastic item / part into mass production we process it to bring in “Pre Moulding Process” stage.

### IDEAS & CONCEPT

Starting ideas and assets with our expertise in toy design and manufacturing. Then we recommend custom toy and collectible concepts that solve your team’s goals and challenges.

Preliminary packaging ideas are also considered, along with all aspects of the final toys. We think about all possible ways to maximize fan excitement and happiness.

### DESIGN & PROTOTYPING

With an approved concept we complete the toy design from top to bottom. Then we start prototyping, using a mix of 3D modeling. Once the model, sculpture or pattern is approved we create painted prototypes and begin designing as well we decide cavities based on customer’s quantity estimate and accordingly we decide Tool specification and after final consent of customer we escalate this project from Pre Moulding Process to Moulding Process.

# DESIGNING & TOOLING

At Krish Toys, we have a fully functional tool room with the capabilities to Manufacture Moulds and Machine Parts.



The maintenance, modifications and corrections required to the mould are done by our team which keeps the production in focus for our customers.



We utilize the best measuring equipment from multiple country to ensure the quality and compliance.



# MOULDING

Once Pre-Moulding Process finished we bring this Plastic Item / Part into mass production with our State of the Art most modern plant handle by our expert engineers. We use the latest plastic injection moulding machines from Ferromatik Milacron and Haitian.

These machines can accommodate much larger moulds compared to equivalent sized machines from other manufacturers. Since these machines are closed loop, there is an increase in mould life by at least 50%.

## KEY POINTS OF OUR MACHINES

- Moulding capacity from 80 T to 160 T.
- Facilitate with fully automatic moulding machine with bi-metallic screw barrel.
- Bimetal has more obvious advantages when processing special plastics to enhance the abrasion life, such as engineering plastics, flourine plastics, PPO, and etc.



Ferromatik Milacron Moulding Machines



Haitian Moulding Machines

# POST MOULDING

The assembly of small parts are done so in a dust free, climate controlled environment within a class 10,000 clean room to prevent the slightest of contamination possible from foreign particles present in the surrounding environment.



The ultrasonic welding is conducted through the latest Rotary Ultrasonics Machines. The premier features of our ultrasonic plastic welding machine is that it has a simple change tool set up, high process reliability and amazing welding skills.

Pad Printing machines ensure the parts required to be printed on are done so with precision. This is conducted in a dust free environment.



# POST MOULDING

We use manual spray printing machine and fully automatic spray printing machine for printing purpose.



Highly calibrated tools like tension tester, torque tester, impact tester, vernier calliper, digital torque tester, sharp edge tester and various clamps for testing are used to determine the quality and accuracy of parts produced.

The assembly of intricate parts is done by a trained, complaint & dedicated team for our clients.



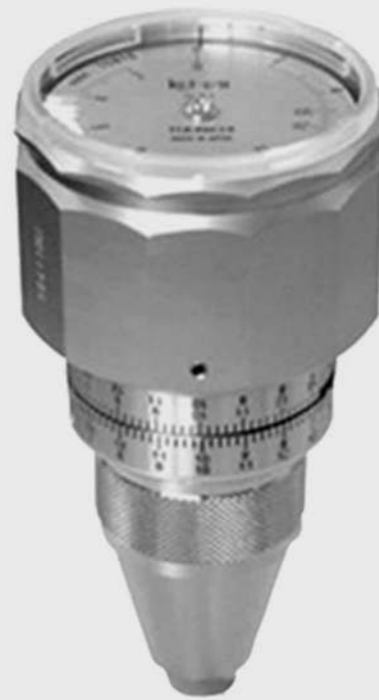


# MECHANICAL TESTING LAB

Highly calibrated tools like tension tester, torque tester, impact tester, vernier calliper, digital torque tester, sharp edge tester and various clamps for testing are used to determine the quality and accuracy of parts produced.



Tension Tester



Torque Tester



Impact Tester



Vernier Calliper



Digital Torque Tester



Sharp Edge Tester



Various Clamps for Testing



## CLEANING ROOM FACILITIES

Clean room with HEPA filter, HEPA stands for high-efficiency particulate air. A HEPA filter is a type of mechanical air filter; it works by forcing air through a fine mesh that traps harmful particles such as pollen, pet dander, dust mites, and tobacco smoke.

# SAFETY & QUALITY CONTROL

Every Krish toy product, wherever it is manufactured, must pass three tests: (1) Meet all relevant national and international standards and, (2) Zero Plus a Safety and quality Test for 0 to 3 years child (2) Satisfy our own safety and quality standards, which are often tougher than global requirements.

## COMMITMENT TO QUALITY

We put our standards into practice through a five-step quality assurance process that requires comprehensive testing or review at every stage of our product lifecycle: Product Concept, Design and Development, Production, Market Monitoring, and Continuous Improvement.

### 1 PRODUCT CONCEPT

After we approve a toy or game concept for development, our specialist engineers specify in a Test Plan the design and manufacturing SRS the product must meet.

### 3 PRODUCTION

Our QA teams check samples during production to ensure they meet Our requirements and audit samples and finished toys and games throughout each shift. Independent outside labs also test our products.

### 2 DESIGN AND DEVELOPMENT

We design products and create samples according to the Test Plan and communicate product-specific requirements to our manufacturing vendors.

### 4 MARKET MONITORING

We monitor and respond to new information on product quality or safety with a focus on consumer feedback and emerging hazards.

### 5 CONTINUOUS IMPROVEMENT

We continuously improve our quality assurance and product safety processes and work with partners to set and comply with standards.

# SOCIAL & ETHICAL COMPLIANCE

Our staff is fully trained for Fire safety and First Aid Response in case of any emergency. Regular training is imparted to the staff as a refresher course to keep the quality and compliance high.

We have External audits from SMETA on a regular basis to verify and ensure all of Labour Standards, Health & Safety, Environment and Business Ethics. The SMETA Best Practice Version 6.1 (March 2019) was applied. The scope of workers included all types at the site e.g. direct employees, agency workers, workers employed by service providers and workers provided by other contractors. Any deviations from the SMETA Methodology are stated (with reasons for deviation) in the SMETA Declaration.



## SMETA Corrective Action Plan Report (CAPR)

Version 6.1



# OUR PRODUCTS

We are a professionally Manufacturing, Exporting, Importing and Supplying the qualitative range of Designer Balloon, Plastic Toy, Kids Truck, Kids Holi Toys, Kids Plane, Kids Racing Cars, Spinner Toy and Kids Sport Products.



# OUR PRODUCTS





*Delivering happiness through Toys*

SMETA Best Practice Version 6.1 (March 2019)

PLOT NO. 39, PAIKI BHAGYODAY HOTEL AT. VASANA IYAVA, UMA ESTATE, SURVEY NO. 249/A,  
NEAR RADHE NAMKEEN, TAL. SANAND, AHMEDABAD-382110, GUJARAT, INDIA  
+91 9909 390 566 | +91 9737 977 077 | INFO@KRISHTOYS.COM | WWW.KRISHTOYS.COM

